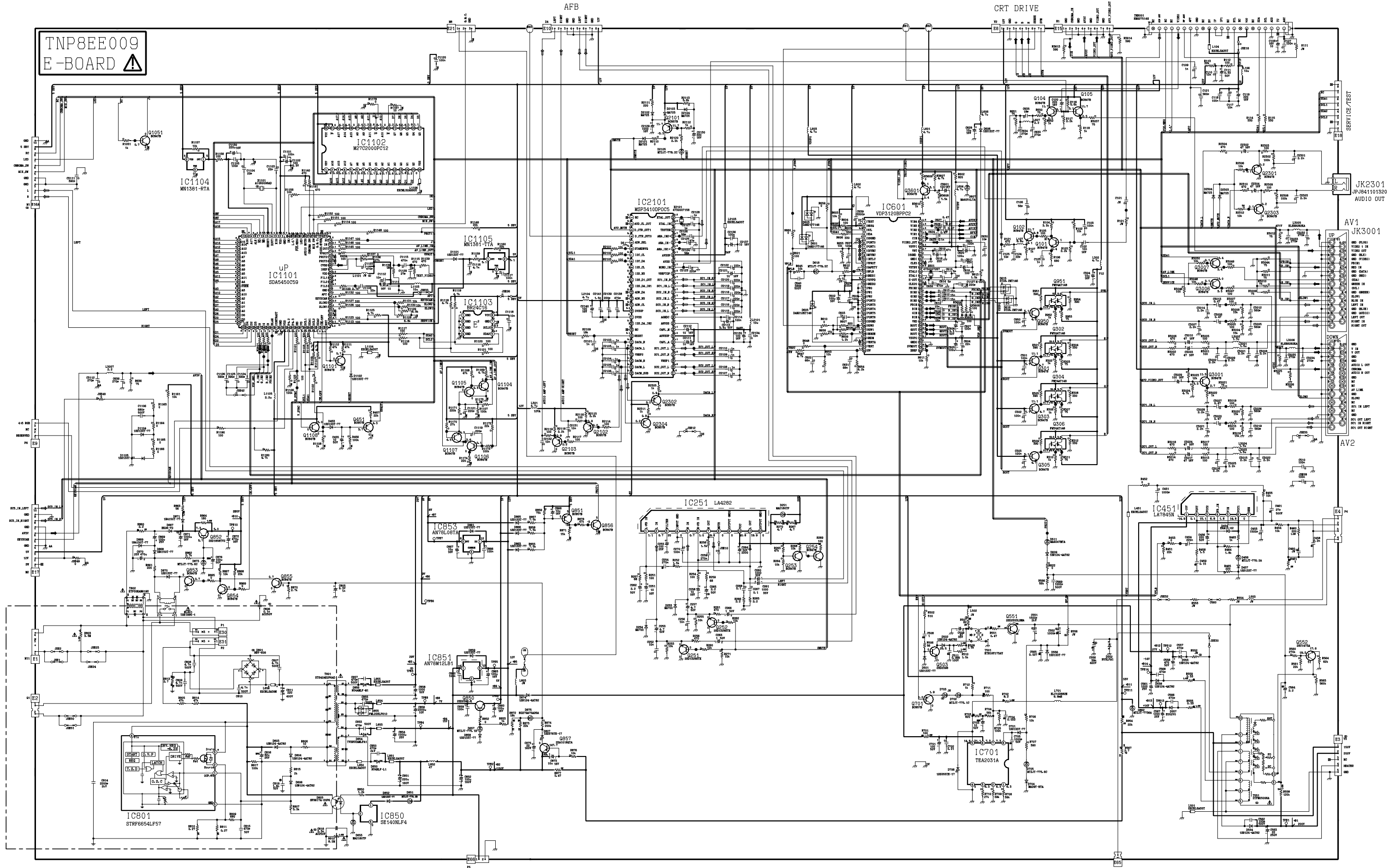


TNP8EZ003  
Z-BOARD

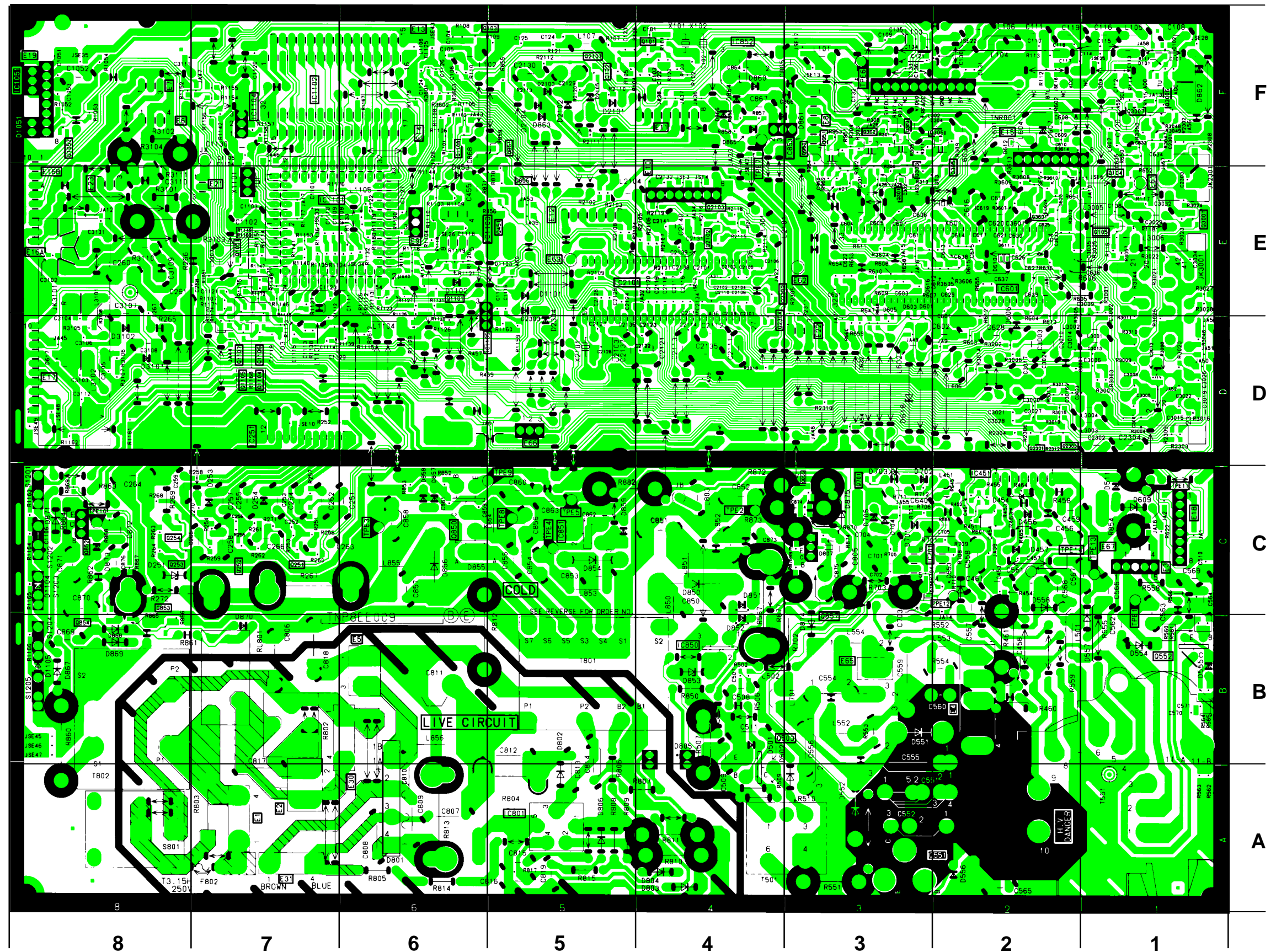
# TX-28PL1



# CONDUCTOR VIEWS FOR MODEL TX-28PL1

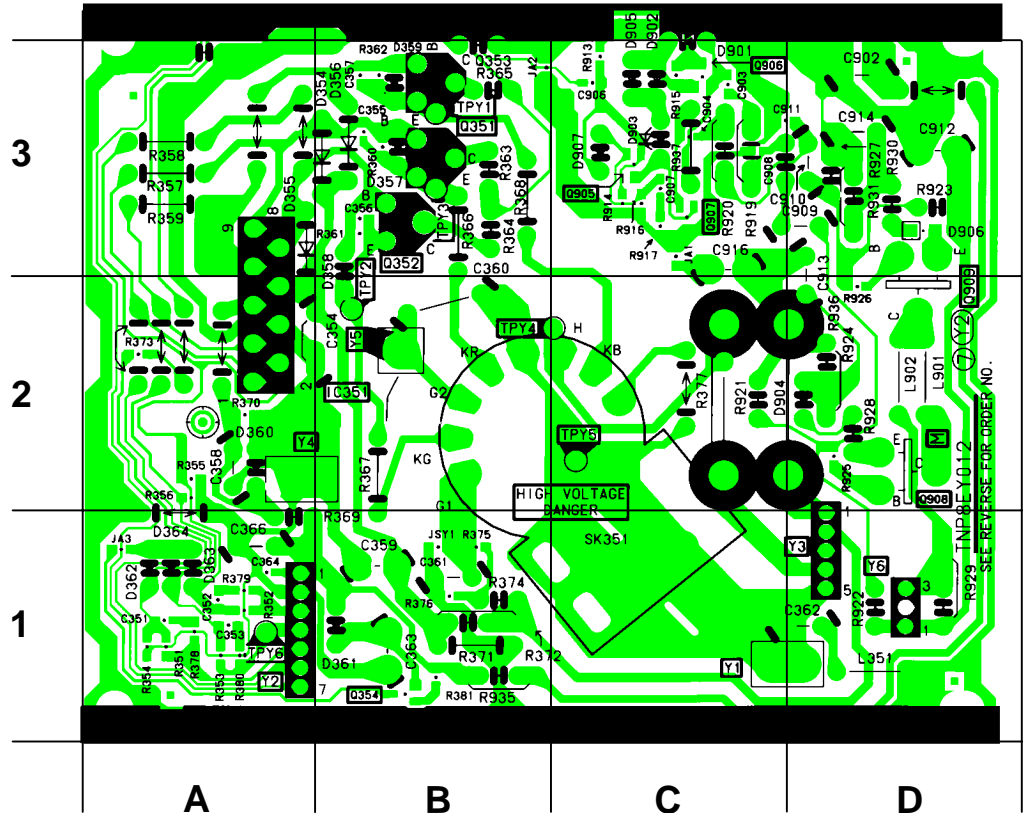
## E-BOARD TNP8EE009

<b>TRAN'S</b>	D1104	C8	D855	C5	
Q101	F4	D1105	B8	D856	C6
Q102	F4	D2101	F5	D857	C6
Q104	E1	D2102	F5	D858	C6
Q105	E1	D2103	F5	D859	C4
Q1051	E7	D2104	F5	D861	F3
Q1101	E6	D2105	F5	D862	F1
Q1104	D7	D2303	D5	D863	F5
Q1105	D7	D2304	D5	D865	F4
Q1106	D7	D251	C7	D866	F4
Q1107	D7	D253	C7	D867	B8
Q1108	F6	D254	C7	D868	B8
Q2101	F5	D453	E6	D869	B8
Q2102	E4	D454	C2	D870	B7
Q2103	E4	D456	C2	D871	C8
Q2301	D2	D457	C2	D873	C8
Q2302	D2	D501	B4	D874	B3
Q2303	D2	D502	A3	D875	C3
Q2304	D4	D511	C1		
Q251	C7	D552	A3		
Q252	C7	D553	C2	<b>IC'S</b>	
Q253	C7	D554	B1	IC1101	E6
Q254	C7	D556	A2	IC1102	F6
Q3001	E1	D557	B1	IC1103	E6
Q3006	F1	D558	C2	IC1104	F7
Q3007	F1	D556	A2	IC1105	D5
Q301	E3	D601	D2	IC2101	E4
Q302	F3	D603	D3	IC251	D7
Q303	E3	D605	D3	IC451	C2
Q304	F3	D606	D2	IC601	E2
Q305	E2	D607	F2	IC701	C2
Q306	F2	D609	C1	IC801	A5
Q3601	E2	D615	E2	IC850	B4
Q451	E5	D616	E2	IC851	C5
Q503	A4	D618	D3	IC853	F3
Q551	A3	D701	C3		
Q552	B1	D702	C2		
Q701	C3	D703	C3	<b>TP'S</b>	
Q850	C5	D704	C3	TPE1	C1
Q851	F5	D705	C3	TPE2	C4
Q852	C8	D706	C3	TPE3	C6
Q853	B7	D801	A6	TPE4	C5
Q854	B8	D803	A4	TPE5	C5
Q855	C3	D804	A4	TPE6	F3
Q856	E5	D805	B4	TPE7	F4
Q857	C3	D806	A5	TPE8	C5
Q950	E3	D807	C3	TPE9	C5
Q951	E3	D850	C4	TPE10	C8
		D851	C4	TPE11	C1
<b>DIODES</b>	D852	B4	TPE12	C2	
D1101	E5	D853	B4	TPE13	C1
D1102	E6	D854	C5	TPE14	C2



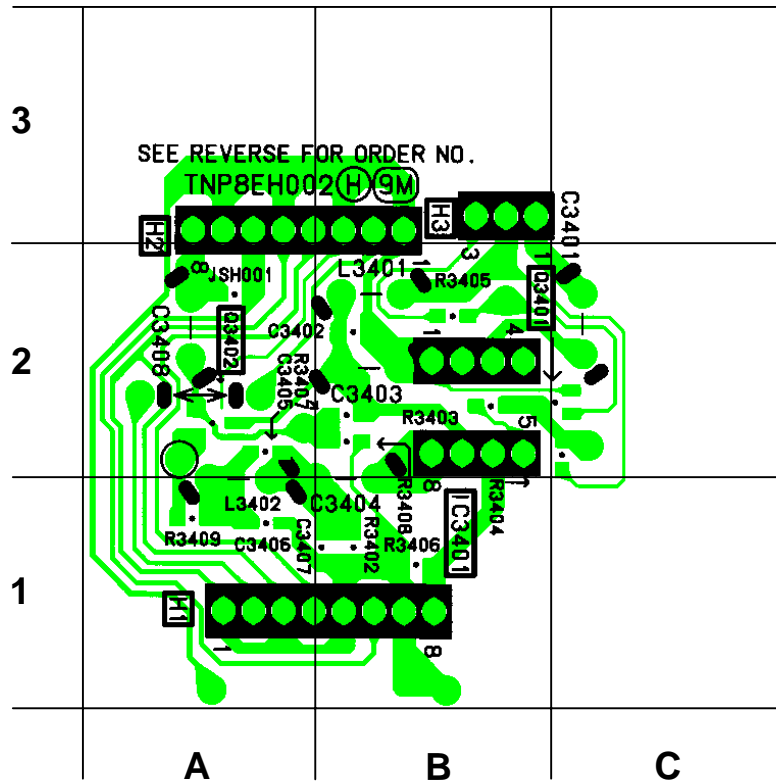
## Y - BOARD TNP8EY012

TRAN'S			
Q351	B3	D362	A1
Q352	B3	D363	A1
Q353	B3	D364	A1
Q354	B1	D901	C3
Q905	C3	D903	C3
Q906	C3	D904	C2
Q907	C3	D905	C3
Q908	D2	D906	D3
Q909	D2	D907	C3
DIODES		IC'S	
D354	B3	IC351	A2
D355	A3		<b>TP'S</b>
D356	B3	TPY1	B3
D357	B3	TPY2	B2
D358	B3	TPY3	B3
D359	B3	TPY4	C2
D360	A2	TPY5	C2
D361	B1	TPY6	A1



## H - BOARD TNP8EH002

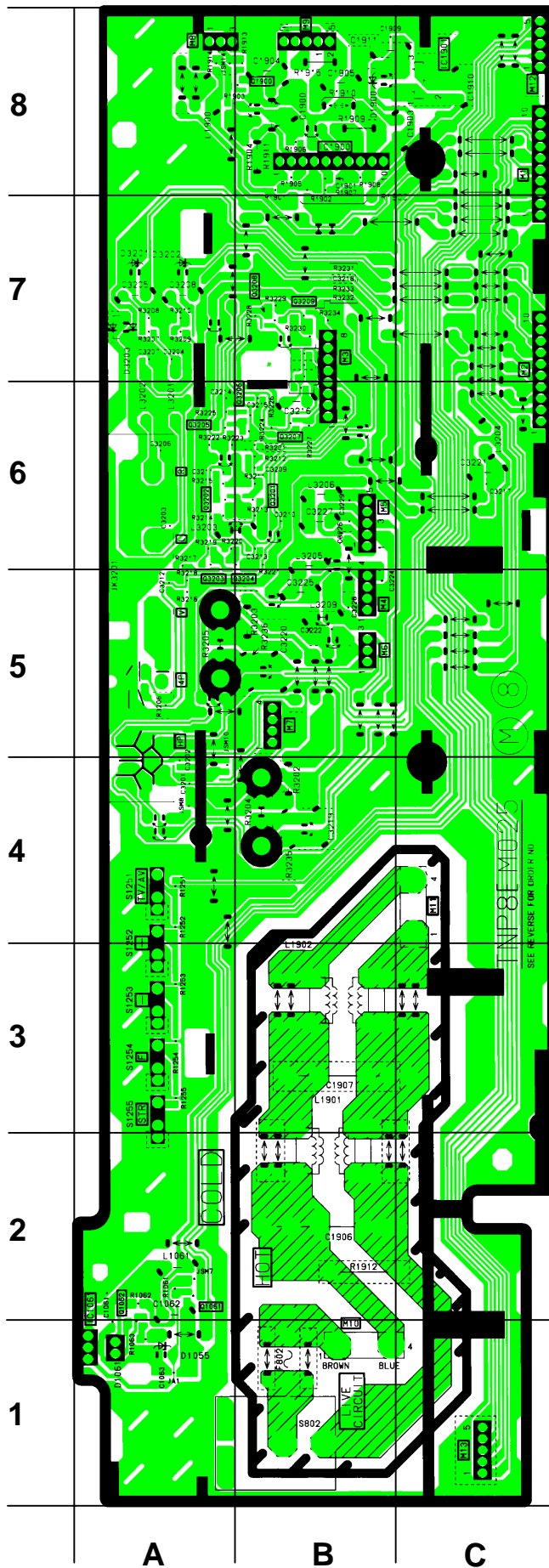
TRAN'S	
Q3401	C2
Q3402	A2
IC'S	
IC3401	B2





# M - BOARD TNP8EM025

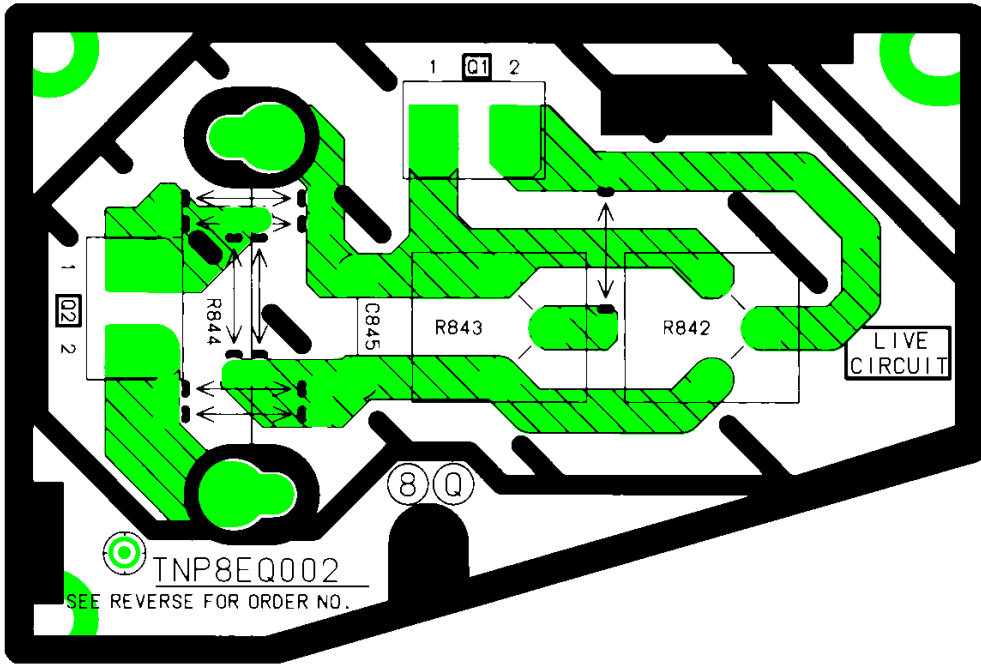
TRAN'S	
Q1062	A1
Q1900	B8
Q3201	B6
Q3202	A6
Q3203	A6
Q3204	B6
Q3205	A6
Q3206	B6
Q3207	B6
Q3208	B7
Q3209	B7
DIODES	
D1055	A1
D1061	A1
D3201	A7
D3202	A7
IC's	
IC1061	A1
IC1900	B8





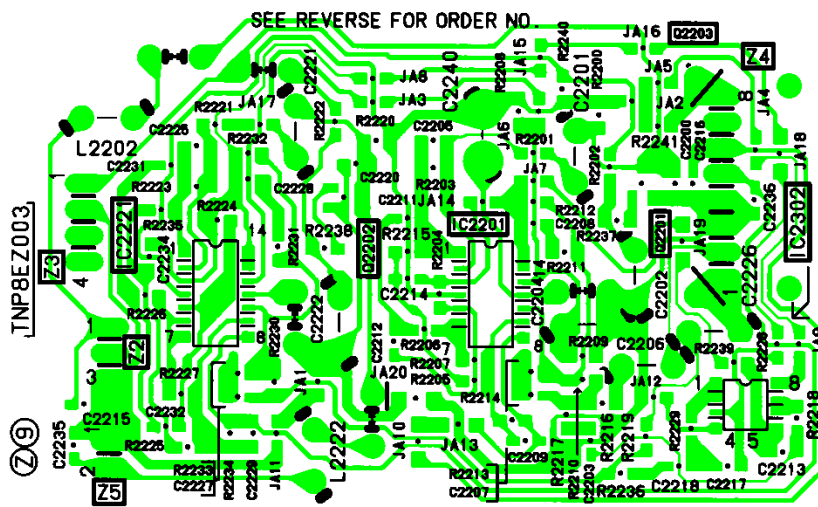


## Q - BOARD TNP8EQ002



## Z - BOARD TNP8EZ003

TRAN'S	IC's
Q2201	IC2201
Q2202	IC2221
	IC2302



## NOTES



A large rectangular area with horizontal dashed lines, intended for writing notes. The lines are evenly spaced and extend across the width of the page.